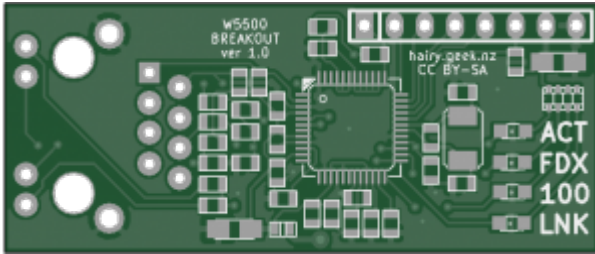


Table of Contents



The breakout board includes all the passives and a crystal needed to drive the chip. The [WIZnet W5500](#) does not include a pre-programmed MAC, you will need to obtain one for production use. As this is a 3.3V part and no level shifting is included, if you want to use this board with a 5V Arduino (ie, most of them) then you'll need to do some level shifting on the SPI interface yourself.

These may eventually be put into production, but for now it's purely for my own code development.

[W5500 Breakout](#)

From:

<http://wizwiki.net/wiki/> -

Document Wiki

Permanent link:

http://wizwiki.net/wiki/doku.php/oshw_using_wiznet:oshw_hairy-geek-nz_001

Last update: 2015/03/16 10:33

